

Region 11 Guadalupe

Regional Flood Planning Group

The Region 11 Guadalupe Regional Flood Planning Group (RFPG) is soliciting nominations to fill four (4) voting positions and one non-voting position on the Region 11 Guadalupe RFPG.

Nominees who either operate in or have interests in the Region 11 Guadalupe RFPG are being solicited to represent the following interest groups:

Voting Members

- (1 seat) River Authorities
- (1 seat) Municipalities
- (1 seat) Counties
- (1 seat) Electric Generating Utilities

Non-Voting Members

- (1 seat) Public

The Guadalupe RFPG was established by the Texas Water Development Board on October 1, 2020, through the designation of initial flood planning group members. The Guadalupe RFPG consists of portions of Bandera, Bastrop, Blanco, Caldwell, Calhoun, Comal, DeWitt, Fayette, Gillespie, Goliad, Gonzales, Guadalupe, Hays, Karnes, Kendall, Kerr, Lavaca, Real, Refugio, Travis, Victoria and Wilson counties lying within the Guadalupe River Basin.

Article V. Section 3 of the adopted Guadalupe RFPG Bylaws states that in order to be eligible for voting membership, a person must be capable of adequately representing the interest for which a member is sought, be willing to participate in the regional flood planning process, attend meetings, and abide by these bylaws.

Nomination forms may be submitted through email to Lauren Willis at lwillis@gbra.org, or by printing the nomination form, completing it and mailing to 933 E. Court Street, Seguin, TX 78155 Attn: Lauren Willis. Nominations must be received by 5:00pm, Monday, January 11, 2021.

Region 11 Guadalupe RFPG

Member Nomination Form

Date:

Name & Email of person submitting this form (Nominator, may be the same as nominee):

Nominee Name:

Nominee Phone:

Nominee E-mail:

Nominee Mailing Address:

County in which the nominee resides:

Nominee Occupation:

Nomination for Interest Group (Check One)

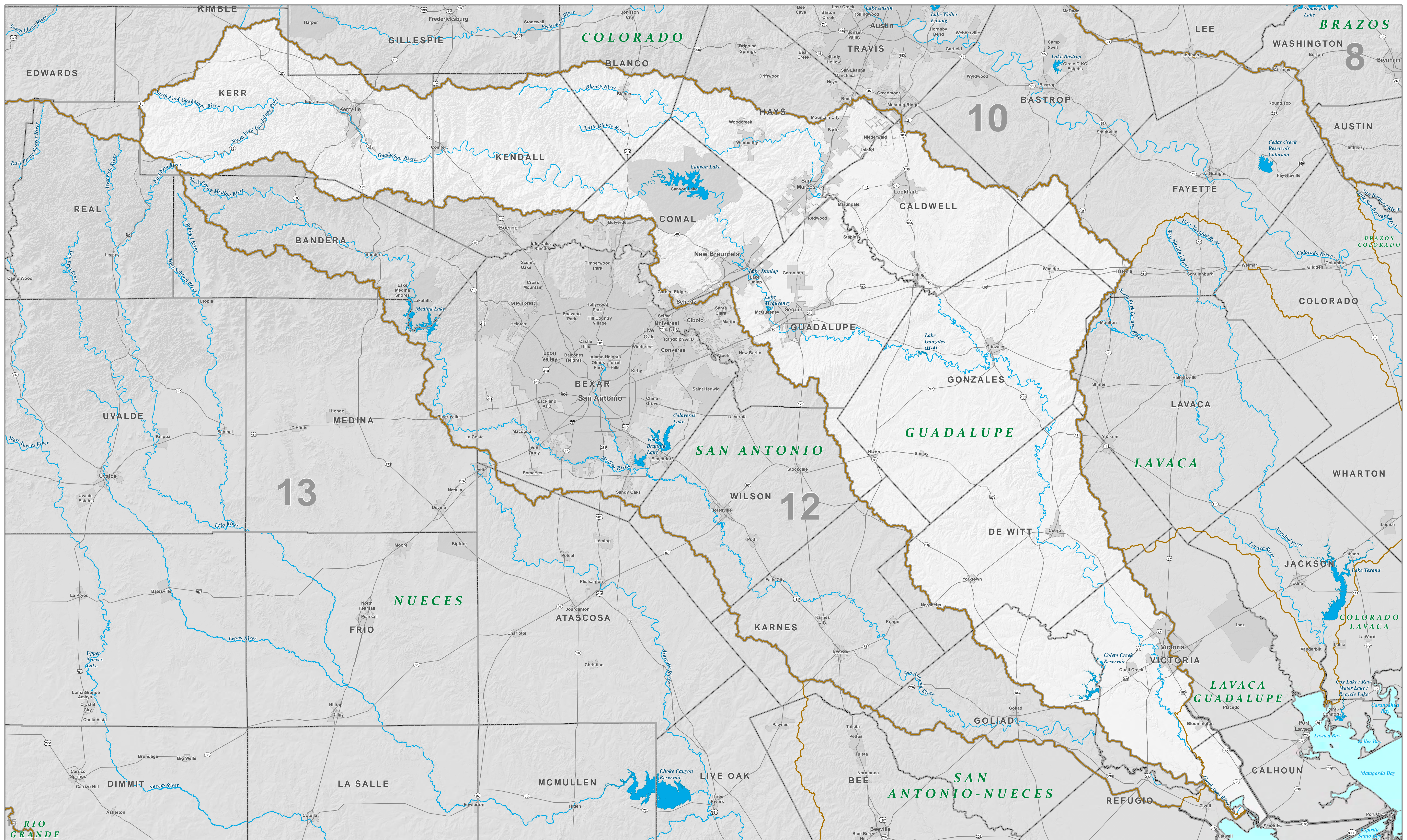
River Authorities Municipalities Counties Public Electric Generating Utilities

Brief bio and summary of qualifications specific to interest group

General type of flood-related knowledge, experience, and approximately number of years of being involved in flood-related issues.

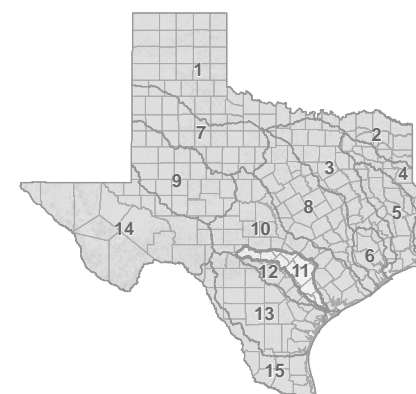
Please provide 2 references (Name, title/affiliation, phone number)

Please list any optional attachments included (Resume, CV, Resolutions, etc.)



GUADALUPE

Flood Planning Region - 11



- Regional Flood Planning Groups**
1. Canadian Upper Red
 2. Lower Red Sulphur Cypress
 3. Trinity
 4. Sabine
 5. Neches
 6. San Jacinto
 7. Upper Brazos
 8. Lower Brazos
 9. Upper Colorado
 10. Lower Colorado-Lavaca
 11. Guadalupe
 12. San Antonio
 13. Nueces
 14. Upper Rio Grande
 15. Lower Rio Grande

- Guadalupe Counties (full and partial)**
- Bandera
 - Bastrop
 - Blanco
 - Caldwell
 - Comal
 - Karnes
 - De Witt
 - Kendall
 - Fayette
 - Gillespie
 - Lavaca
 - Real
 - Refugio
 - Travis
 - Victoria
 - Wilson
 - Ken

- FPR 11 Boundary
- Adjacent FPR Boundaries
- County Boundaries
- Major Reservoirs and Lakes
- Major and Minor Rivers
- Major Roadways
- Cities, Towns, Villages, & CDPs

Map Scale = 1:450,000

DISCLAIMER: This data was generated by the Texas Water Development Board using GIS (Geographic Information System) software. No claims are made for the accuracy or completeness of the information shown here nor for its suitability for a particular use. The names and locations of all mapped data are approximate. 10/01/2020

DATA SOURCES: Regional Flood Planning Groups (RFP): Texas Water Development Board (TWDB); Counties, Cities & Towns: Texas Department of Transportation (TxDOT); Census Designated Places: United States Census Bureau (USCB); Hydrography: Texas State Geographical Survey (TSGS); National Hydrography Data Set (NHDS) & TWDB. All data are in the public domain.

Texas Water Development Board - 1700 North Congress Avenue, Austin, TX 78701 - www.twdb.texas.gov